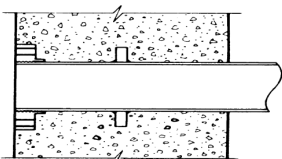
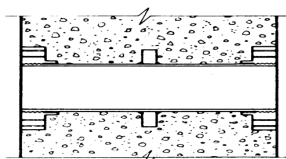


FLANGE / PIPE DIMENSIONS

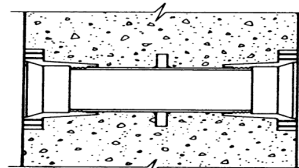
NOM. PIPE SIZE	FLANGE OD	FLANGE THICKNESS	BOLT CIRCLE	PIPE OD	PIPE THICKNESS	BOLT HOLE DIAMETER	BOLT SIZE	NUMBER OF BOLTS
3"	7.5	0.75	6	3.96	0.31	0.75	0.625 X 2.5	4
4"	9	0.94	7.5	4.80	0.32	0.75	0.625 X 3	8
6"	11	1	9.5	6.90	0.34	0.875	0.75 X 3.5	8
8"	13.5	1.12	11.75	9.05	0.36	0.875	0.75 X 3.5	8
10"	16	1.19	14.25	11.10	0.38	1	0.875 X 4	12
12"	19	1.25	17	13.20	0.4	1	0.875 X 4	12
14"	21	1.38	18.75	15.30	0.42	1.125	1 X 4.5	12
16"	23.5	1.44	21.25	17.40	0.43	1.125	1 X 4.5	16
18"	25	1.56	22.75	19.50	0.44	1.25	1.125 X 5	16
20"	27.5	1.69	25	21.60	0.45	1.25	1.125 X 5	20
24"	32	1.88	29.5	25.80	0.47	1.375	1.25 X 5.5	20
30"	38.75	2.12	36	32.00	0.51	1.375	1.25 X 6.5	28
36"	46.00	2.38	42.75	38.30	0.58	1.625	1.5 X 7	32
42"	53.00	2.62	49.50	44.50	0.65	1.625	1.5 X 7.5	36
48"	59.50	2.75	56.00	50.80	0.72	1.625	1.5 X 8	44
54"	66.25	3.00	62.75	57.56	0.81	2.00	1.75 X 8.5	44
60"	73.00	3.12	69.25	61.61	0.83	2.00	1.75 X 9	52
64"	80.00	3.38	76.00	65.67	0.87	2.00	1.75 X 9	52



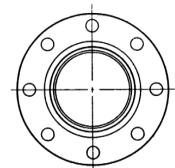
FLG X PLN



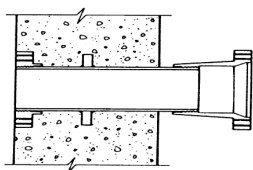
FLG X FLG



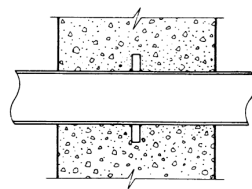
MJ X MJ



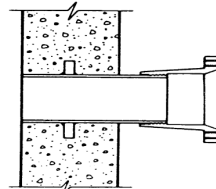
125# DUCTILE IRON FLANGE



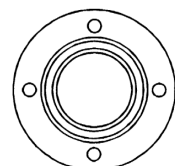
FLG X MJ



PLN X PLN



MJ X PLN



MJ ADAPTER BELL

FABRICATION SPECIFICATIONS—NOTES

FLANGED

PER AWWA C115 / A21.15 FLANGES SHALL HAVE A TAPER PIPE THREAD IN ACCORDANCE WITH ANSI B1-20.1 / 250 PSI WORKING

PIPE

PER AWWA C115 / CLASS 53 DUCTILE IRON

THREADED MECHANICAL JOINT ADAPTERS

PRODUCED FROM DIMENSIONS PROVIDED BY ANSI / AWWA C111 / A21.11 AND ARE THREADED IN ACCORDANCE WITH AWWA C115 / A21.15

WALL RING

FILLET WELDED 360 DEGREES AROUND PIPE AND RING TO CREATE A WATERTIGHT SEAL

PROUD MEMBER OF

American Waterworks Association
National Association of Pipe Fabricators

