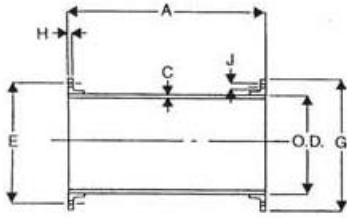
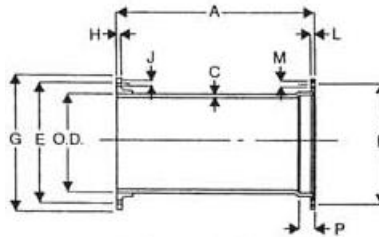


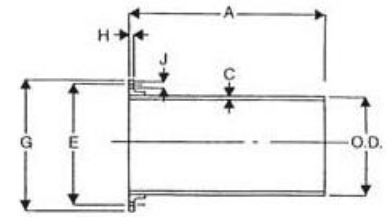
Fabricated Flange Pipes



FLG. x FLG.



FLG. x M.J.



FLG. x P.E.

Size	A	B	C	O.D.		E	G	H		No. of Flanged Bolt Holes	J	K		L		No. of M.J. Bolt Holes	M		P
				Min.	Max.			Min.	Max.			Min.	Max.	Min.	Max.				
3	•	•	0.31	3.90	4.02	6.00	7.50	0.63	0.87	4	0.75	6.13	6.25	0.88	0.94	4	0.75	0.81	2.50
4	A	A	0.32	4.74	4.86	7.50	9.00	0.82	1.06	8	0.75	7.44	7.56	0.94	1.00	4	0.875	0.935	2.50
6	S	S	0.34	6.84	6.96	9.50	11.00	0.88	1.12	8	0.875	9.44	9.56	1.00	1.06	6	0.875	0.935	2.50
8	•	•	0.36	8.99	9.11	11.75	13.50	1.00	1.24	8	0.875	11.69	11.81	1.04	1.12	6	0.875	0.935	2.50
10	•	•	0.38	11.04	11.16	14.25	16.00	1.07	1.31	12	1.00	13.94	14.06	1.11	1.19	8	0.875	0.935	2.50
12	R	R	0.40	13.14	13.26	17.00	19.00	1.13	1.37	12	1.00	16.19	16.31	1.17	1.25	8	0.875	0.935	2.50
14	E	E	0.42	15.22	15.35	18.75	21.00	1.19	1.57	12	1.125	18.69	18.81	1.19	1.31	10	0.875	0.935	3.50
16	Q	Q	0.43	17.32	17.45	21.25	23.50	1.25	1.63	16	1.125	20.94	21.06	1.26	1.38	12	0.875	0.935	3.50
18	U	U	0.44	19.42	19.55	22.75	25.00	1.37	1.75	16	1.25	23.19	23.31	1.32	1.44	12	0.875	0.935	3.50
20	I	I	0.45	21.52	21.65	25.00	27.50	1.50	1.88	20	1.25	25.44	25.56	1.38	1.50	14	0.875	0.935	3.50
24	R	R	0.47	25.72	25.85	29.50	32.00	1.69	2.07	20	1.375	29.94	30.06	1.50	1.62	16	0.875	0.935	3.50
30	E	E	0.51	31.94	32.08	36.00	38.75	1.87	2.37	28	1.375	36.82	36.94	1.69	1.81	20	1.125	1.185	4.00
36	D	D	0.58	38.24	38.38	42.75	46.00	2.13	2.63	32	1.625	43.69	43.81	1.88	2.00	24	1.125	1.185	4.00
42	•	•	0.65	44.44	44.58	49.50	53.00	2.37	2.87	36	1.625	50.56	50.68	1.88	2.00	28	1.375	1.435	4.00
48	•	•	0.72	50.74	50.88	56.00	59.50	2.50	3.00	44	1.625	57.44	57.56	1.88	2.00	32	1.375	1.435	4.00
54	•	•	0.81	57.40	57.64	62.75	62.75	2.75	3.25	44	1.875	N/A	N/A	N/A	N/A	N/A	N/A	N/A	N/A
60	•	•	0.83	61.51	61.65	69.25	73.00	2.87	3.37	52	2.00	N/A	N/A	N/A	N/A	N/A	N/A	N/A	N/A
64	•	•	0.87	65.57	65.71	76.00	80.00	3.13	3.63	52	2.00	N/A	N/A	N/A	N/A	N/A	N/A	N/A	N/A

Tolerance on length of FLG. x FLG. and FLG. x M.J. pipe shall be ± 0.125 ".

Tolerance on length of FLG. x P.E. shall be ± 0.250 ".

Above material shall meet all applicable section of ANSI A21.10, A21.15, A21.51, B2.1, B16/AWWA, C110, C115, C150, C151, and all revisions thereto.

Flanged pipe shall be ductile iron pipe with ductile iron flanges threaded on.