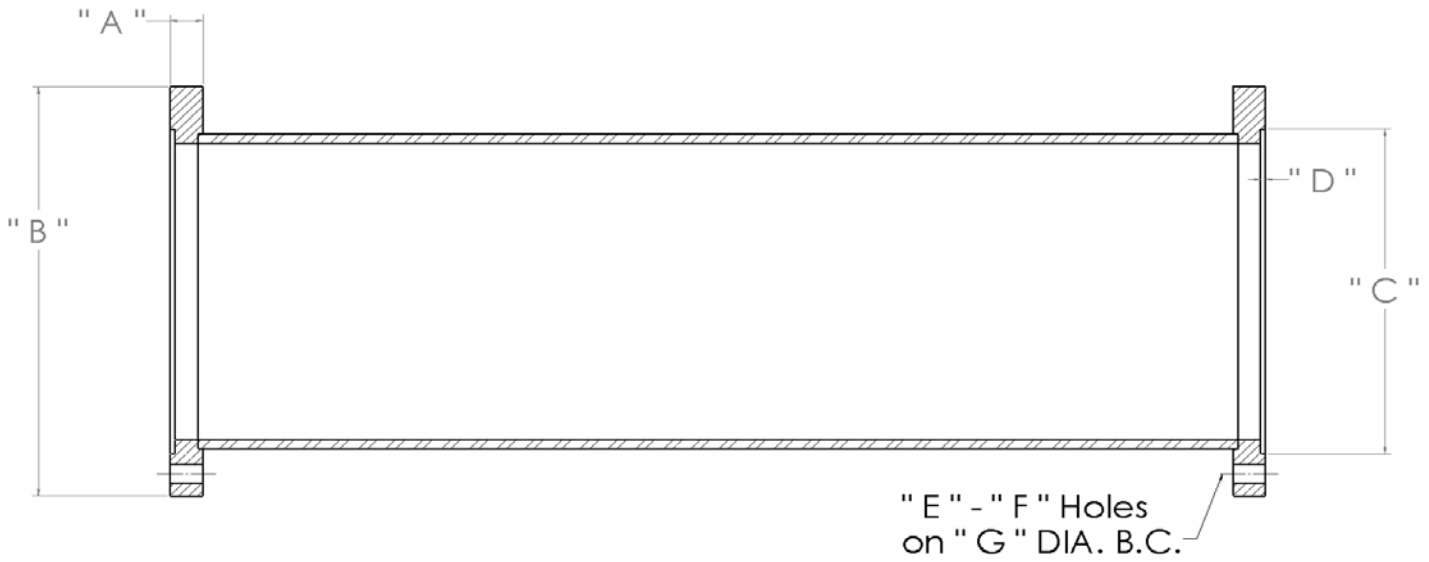


Column Pipe Dimensions



Pipe Size	A	B	C	D	E	F	G	Bolts Size & Length
3	3/4"	5 5/8"	3.310 / 3.315	0.240 / 0.245	6	9/16"	4 3/4"	1/2" - N.C. x 2 3/4"
4	3/4"	7 1/2"	4.312 / 4.315	0.240 / 0.245	8	3/4"	6 1/4"	5/8" - N.C. x 2 3/4"
5	7/8"	8 1/4"	5.375 / 5.378	0.365 / 0.370	8	3/4"	7 1/8"	5/8" - N.C. x 3"
6	1"	10"	6.435 / 6.443	0.365 / 0.370	8	7/8"	8 5/8"	3/4" - N.C. x 3 1/2"
8	1"	12"	8.435 / 8.443	0.365 / 0.370	8	7/8"	10 5/8"	3/4" - N.C. x 3 1/2"
10	1 1/8"	14 5/8"	10.561 / 10.569	0.365 / 0.370	12	1"	13"	7/8" - N.C. x 3 3/4"
12	1 1/4"	16 5/8"	12.537 / 12.545	0.365 / 0.370	12	1"	15"	7/8" - N.C. x 4"
14	1 3/8"	18 1/2"	13.787 / 13.795	0.365 / 0.370	12	1"	16 3/4"	7/8" - N.C. x 4"
16	1 3/8"	21 1/2"	15.787 / 15.795	0.365 / 0.370	12	1 1/4"	18 3/4"	1 1/8" - N.C. x 4 1/2"
18	1 5/8"	23"	17.787 / 17.790	0.19	12	1 1/4"	21"	1 1/8" - N.C. x 5"
20	1 5/8"	25"	19.787 / 19.790	0.19	16	1 1/4"	23"	1 1/8" - N.C. x 5"